

COMPANY PROFILE

“Your Trusted Global Apparel & Lifestyle Sourcing Partner in Bangladesh”

COMPANY ESTABLISHED IN 2019

MD.MAFUZUL KABIR

CHIEF EXECUTIVE OFFICER



CONTACT DETAILS :

MD.MAFUZUL KABIR

Mobile : +880 1684979445(What's App)

Phone :

E-mail : mahfuj@bdfashionsourcing.com

Gmail : mahfuj.bdfashion@gmail.com

WeChat: wxid_9yyi410105e122

Linkedin: <https://www.linkedin.com/in/md-mafuzul-kabir-56275b169>

CORPORATE HEAD OFFICE

BD FASHION SOURCING

House: J - 26, Flat: 3rd Floor 1st Unit,
Block: J, Road: Rupnagar Road,
Extension Pallabi, Mirpur 11, Dhaka 1216

E-mail : mahfuj@bdfashionsourcing.com

Mobile : +880 1684979445 (what's app)

REGISTERED OFFICE

BD FASHION SOURCING

House: J - 26, Flat: 3rd Floor 1st Unit,
Block: J, Road: Rupnagar Road,
Extension Pallabi, Mirpur 11, Dhaka 1216

E-mail : info@bdfashionsourcing.com

Mobile : +880 1684979445 (what's app)



Company Overview :

BD Fashion Sourcing is a professionally managed garment and apparel sourcing company based in Bangladesh. We specialize in connecting global brands and retailers with reliable, compliant, and quality-driven manufacturers across the country.

With a strong sourcing network and hands-on merchandising support, we provide end-to-end solutions—from product development to bulk production—ensuring consistency, transparency, and on-time delivery.

Our focus is to build long-term partnerships by delivering the right product, at the right quality, at the right time.



Who We Are :

- We are a sourcing and buying house dedicated to knit, woven, sweater, and lifestyle apparel categories. Our team works closely with approved manufacturing partners to ensure strict quality control, ethical compliance, and production efficiency.
- We act as a bridge between buyers and factories, managing communication, costing, sampling, production follow-up, and shipment coordination.

We do not just manage orders -
we manage relationships, brand value, and trust.

LEGAL STATUS & REGULATORY INFORMATION OF THE COMPANY

100% Export Oriented Buying Agent.

- Registered Buying House.
- Valid Trade License.
- BIN (VAT Registration).
- TIN Certificate.
- BGBA Membership.
- Department of Textiles (DOT) Registration.
- Global Location Registration.
- Import Registration.
- Export Registration.



TAX IDENTIFICATION NO
632714639366



VAT IDENTIFICATION NO
002470064-0102



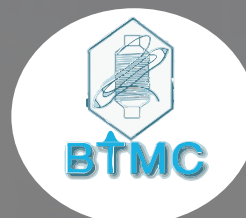
IMPORT REGISTRATION NO.
IRC :



BGBA
Bangladesh Garment
Buying House Association.
BGBA REGISTRATION NO.:B-1095



EXPORT REGISTRATION NO.
ERC :



Department of Textile
Reg. No. (DOT/BH/EXP)-L-0677



TRADE LICENSE NO :
TRAD/DNCC/040239/2022



Global Location Number
(GLN) : 8904368530747

Our operations are fully compliant with Bangladesh government regulations and international trade requirements.

Product Categories We Specialize In

"We have experience executing programs across men's, women's and kids wear categories."

KNIT/JERSEY MEN'S ,WOMEN'S & KIDS WEAR

- Knitwear, Basic & Fashion T-Shirts, Polo Shirts, Leggings, sportswear, Hoodies & Sweatshirts, Loungewear & Activewear etc.



100% cotton, CVC, PC, Viscose in single jersey, pique, slub, interlock, 1x1 rib, 2x2 rib, French terry, French rib, terry brush fleece, micro fleece, polar fleece, yarn-dyed feeder stripe, engineering stripe. 95/5 cotton/elastane in single jersey, pique, French terry, fleece, jersey denim, Roma, Hacci, Sherpa, Terry Towel, Velour, etc.



WOVEN ITEMS

MEN'S ,WOMEN'S & KIDSWEAR

- Woven Apparel, Shirts & Blouses, Trousers & Chinos, Denim, Dresses, skirts, shorts, Jackets & Light Outerwear, Casual & Formal Wear, casual tops etc.



Fabrics-

Cotton, blended, oxford, twill, canvas, poplin, denim, colored denim, corduroy, knitted denim, terry denim, dobby, etc.



SWEATER

MEN'S ,WOMEN'S & KIDS WEAR

➤3GG- 12 GG Sweater & Knitwear, Pullover, Cardigan, Vest,

➤Yarns: Cotton, Acrylic, Wool blends,



Medical Wear & Healthcare Apparel

We offer compliant and responsibly sourced medical and healthcare apparel tailored to meet international buyer specifications and regulatory expectations.

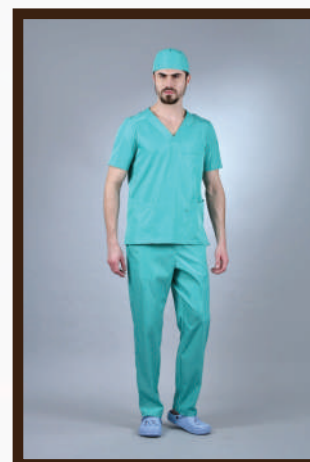
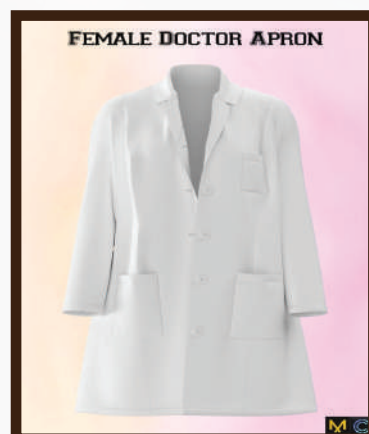
Product Range

- Medical Scrubs (tops & trousers)
- Lab Coats & Doctor Aprons
- Patient Gowns & Hospital Uniforms
- Healthcare Workwear

Key Features

- Suitable fabrics for healthcare use (comfort, durability, easy care)
- Controlled production through approved manufacturing partners
- Focus on hygiene, consistency, and wearer safety
- Customization based on buyer specifications

All medical wear sourcing is managed with strict attention to quality control, ethical practices, and applicable compliance requirements, ensuring reliability for healthcare and institutional buyers.



OUTERWEAR

➤ Jackets, coats, padded & non-padded
outerwear, rainwear etc



LEATHER PRODUCTS

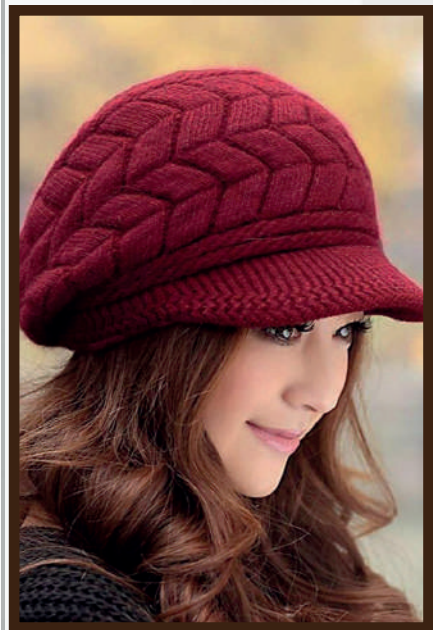
➤ Wallets, belts, leather jackets, bags, small leather goods etc

Sourcing through specialized partner factories



Caps-

Baseball caps, knitted caps, fashion caps, promotional headwear etc.



Home Textiles-

Bedding, towels, cushion covers, kitchen linens, Doctor apron, Hospital dress etc.



Bag & Accessories



JUTE & Eco-friendly products-

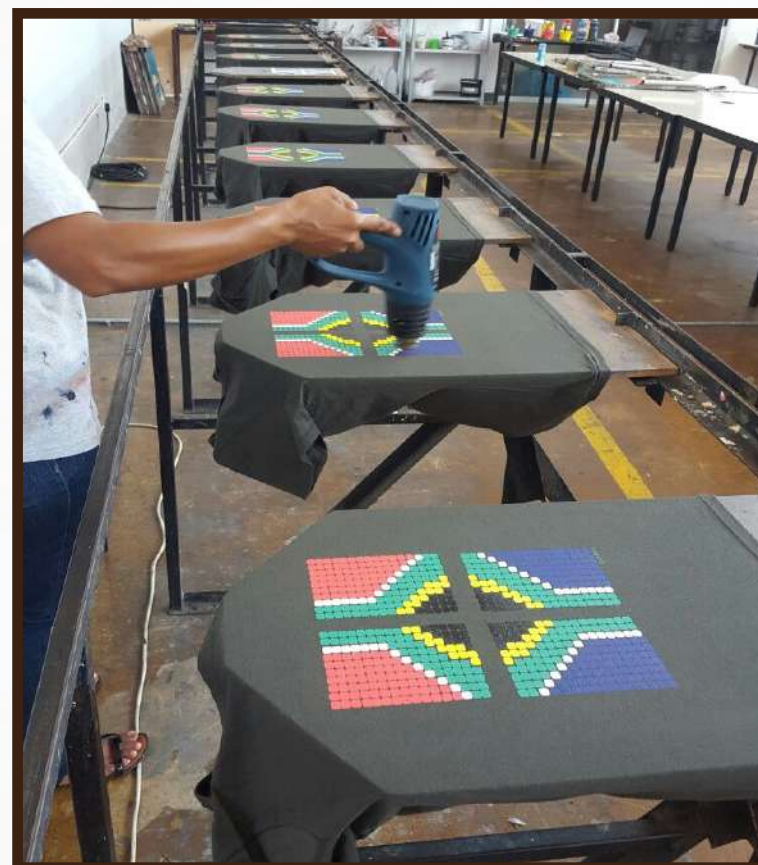
- Eco-friendly jute bags, shopping bags, promotional bags etc.
(Customized sourcing based on buyer requirements)



Product range can be customized based on buyer specifications.

EMBELLISHMENT FACILITY-

A wide range of printing, embroidery, and washing processes are supported through approved partner facilities.



WASHING CAPABILITY-

We have enough capability to handle all kinds of wash: garment enzyme wash, heavy garment wash, stone enzyme wash, pigment wash, garment wash, tie dye, enzyme, bleach, hand brush, monkey, mustaches, broken edge, burn out, acid wash, damage with zigzag stitch, 3D crinkle, scraping, tint, press effect, PP spray, deep dye, gradient etc.



All Processes are managed with approved and experienced service providers.

Operational Capability & Production Overview

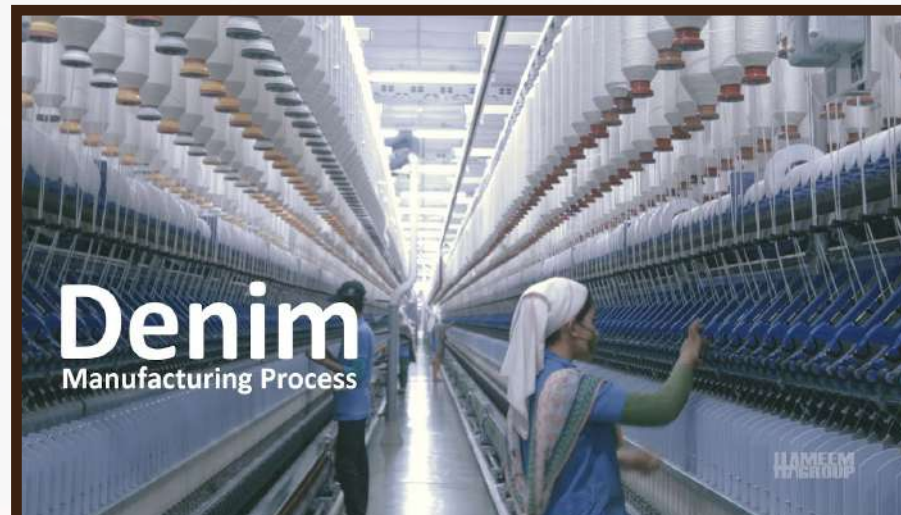
Sourcing & Production Capacity

Our sourcing network includes multiple compliant factories with modern machinery and skilled manpower.

Production capacity (Approx).

- *Knitwear: Approx. 1.0 million pcs/month.
- *Woven: Approx. 0.25 million pcs/month .
- *Sweater: Seasonal /scalable capacity based on buyer requirements.
- *Home textiles: Flexible capacity based on product type.
- *Leather Products: Small to medium volume with premium quality focus.
- *Jute bags: Commercial and customized volume support.

Capacity may vary depending on style complexity and buyer requirements. Factories are selected based on quality systems, compliance standards, and delivery performance.



LEAD TIME & LOGISTICS-

Lead Time Management

- *Sampling: 7-14 days
- *Knitwear : approx. 60 days
- *Woven: approx. 90-120 days
- *Sweaters: approx. 90-120 days
- *Home Textiles: 60-90 days
- *Leather Products: 60-90 days
- *Jute Bags: 45-60 days,

Bulk production lead time ranges from 60 -120 days, depending on product category, style complexity and order quantity.

We coordinate closely with factories and logistics partners to ensure on-time shipment.

QUALITY CONTROL-

- *Quality Assurance
- *We follow a structured quality control process:
- *Pre-production approval
- *Inline inspection
- *Final inspection
- *AQL-based quality checks
- *Our QC team ensures that all products meet buyer specifications and international standards.



SAMPLE & DEVELOPMENT-

Product Development

Proto samples

Fit samples

PP samples

Lab dips & trims approval

We support fast and accurate sampling to meet buyer timelines and design expectations.



COMPLIANCE & ETHICS-

Compliance Commitment

We prioritize ethical manufacturing and social compliance. Our partner factories maintain standards related to:

Worker safety

Fair labor practices

Environmental responsibility

Compliance documentation and audit reports can be shared upon buyer request.



OUR MISSION

To deliver reliable, compliant, and cost-effective garment sourcing solutions by connecting global buyers with the right manufacturing partners in Bangladesh.

OUR VISION

To become a trusted sourcing partner for international brands by ensuring quality consistency, ethical practices, and long-term collaboration.

OUR VALUES

Transparency in communication

Commitment to quality

Ethical and compliant sourcing

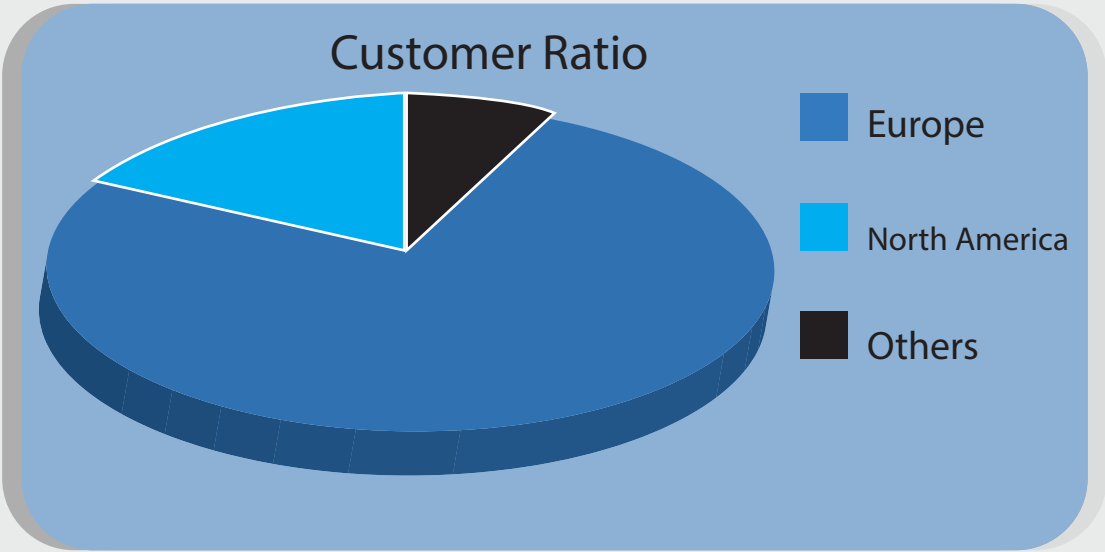
On-time delivery & accountability



CLIENTS & MARKETS

Markets We Serve

- *Europe
- *United Kingdom
- *North America



- Ombre_ Poland
- Carry SP _ Poland
- Kera collection
GMBH co.kg_ germany
- TFC express _ Canada

OMBRE

CARRY SP

KERA COLLECTION

TFC EXPRESS

BANK & PAYMENT



BRAC BANK

Account Name : **BD FASHION SOURCING**
Account No : **XXXXXXXXX0001**
Bank Name : **BRAC BANK PLC**
Bank Address : **Anik Tower, 220/B, Tejgaon Gulshan
Link Road Tejgaon, Dhaka 1208, Bangladesh.**
Bank Swift Code: **BRAKBDDH**
Bank Web Address : **www.bracbank.com**



Account Name : **BD FASHION SOURCING**
Account No. : **XXXXXXXXX7414**
Bank Name : **AGRANI BANK PLC**
Bank Address : **Banani Corporate Branch, Floor 2,
26 Kemal Ataturk Avenue, Banani, Dhaka-1213,**
Bank Swift Code : **AGBKBDDH008**
Bank Web Address : **https://www.agranibank.org/**



MODE OF PAYMENT

LC - Letter of Credit

TT - Telegraphic Transfer



Contact us-

House: J - 26, Flat: 3rd Floor 1st Unit,
Block: J, Road: Rupnagar Road,
Extension Pallabi, Mirpur 11, Dhaka 1216
E-mail : **mahfuj@bdfashionsourcing.com**
Mobile : **+880 1684979445 (what's app)**